

Cape Ellsworth

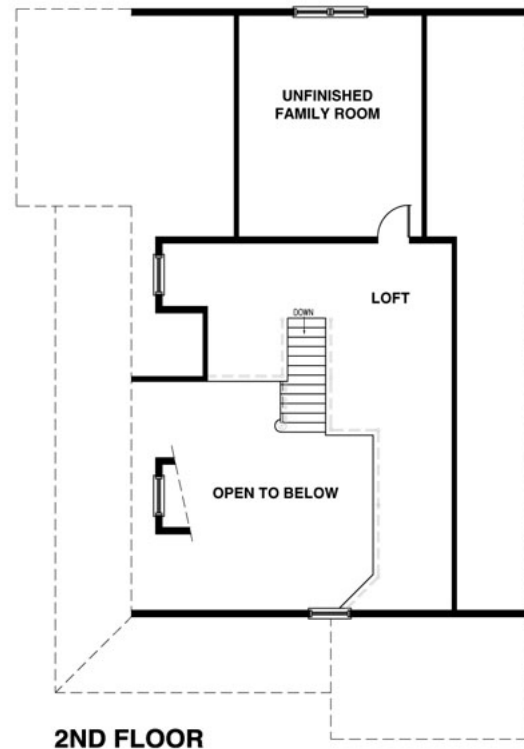
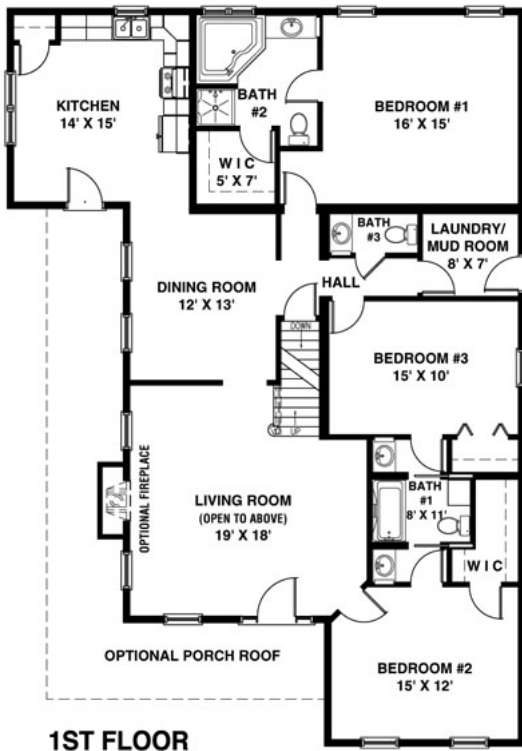


Bedrooms: 3

Bathrooms: 2 1/2

Square Feet: 1707 sq ft

Short Description: This 1,700 square foot floor plan provides ample space in its three bedroom, two and one-half bath design. Created with an optional wrap-around porch, the Cape Ellsworth has beautiful features and unique extras in every room. From the secluded master suite, to the enormous living room, the Cape Ellsworth is designed for efficiency. Plus, its unique design is ideal for a narrow lot or corner lot locations.





Cape Ellsworth