

Salisbury

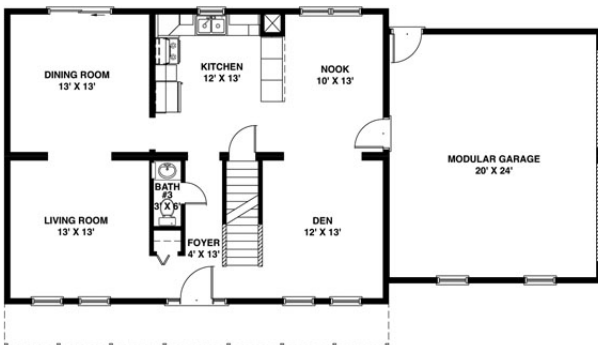


Bedrooms: 4

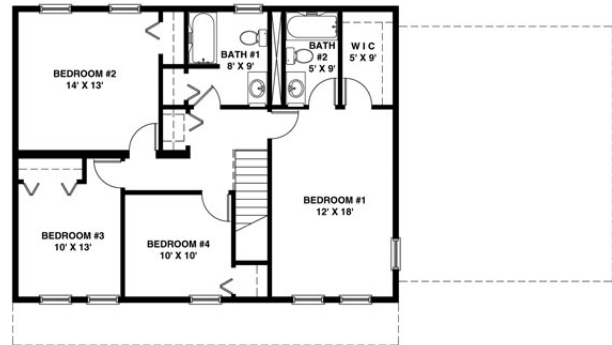
Bathrooms: 2 1/2

Square Feet: 2058 sq ft

Short Description: The essence of this traditional two-story home is captured by the flow of the floor plan. A generous living room and den occupy the front of the first floor, while the kitchen, breakfast nook and dining room complete the first floor design. The second story provides four bedrooms and two full baths.



1ST FLOOR



2ND FLOOR