

Manchester

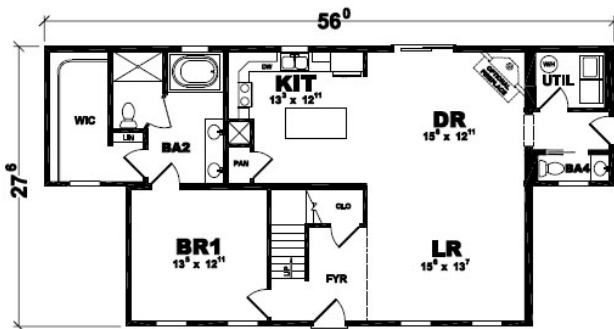


Bedrooms: 4

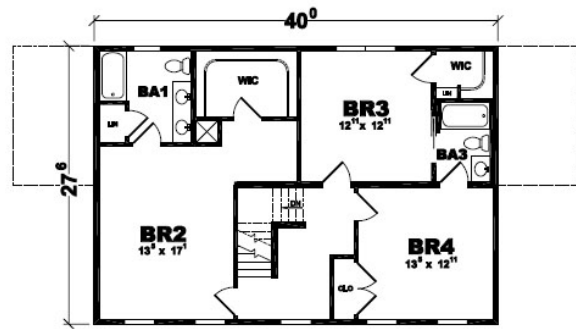
Bathrooms: 4

Square Feet: 2420 sq ft

Short Description: Of all the options offered by your Manchester home, the toughest decision to make might just be which bedroom suite to call your own. Upstairs or downstairs suites include roomy walk-in closets and spacious bathrooms with his/hers vanity. The total package – four bedrooms and four baths, a wide-open living room/dining room design, plus an ample kitchen with island – make the Manchester a home concept with room for your family to move, grow and relax.



First Floor Layout



Second Floor Layout

